

Mobility and Infrastructure

Sustainable infrastructure and multimodal mobility




ARTELIA

ERREGI JOINS ARTELIA ITALIA

 **2025...**
Together For Mobility


ERREGI
ARTELIA GROUP



Olbia General Aviation Airport

ERREGI JOINS THE ARTELIA GROUP

Artelia Italia strengthens its infrastructure and mobility capabilities through the acquisition of Erregi S.r.l.

In August 2025, Artelia Italia announced the acquisition of 100% of Erregi S.r.l., an engineering company based in Rome, specialising in the integrated design of transport infrastructure in Italy and abroad (roads, railways, tramways, underground railways and airports).

The transaction is part of Artelia Italia's growth and diversification plan, confirming its position as one of the leading multinational engineering companies in the country, with a workforce of over 700 professionals and an annual turnover of over £75 million. With the addition of Erregi, the technical offering in the five key pillars is now complete: real estate, multisite retail, energy, industry and now mobility.

Founded by Giovanni Zallocco, Erregi has been operating for 40 years in large public infrastructure projects and with leading companies in the sector. Mr Zallocco will remain at Artelia to oversee the transition and ensure operational and relational continuity.

ARTELIA GROUP

The Artelia Group is an international engineering, consulting, and project management firm active in the mobility, water, energy, construction, and industry sectors. It has 10,100 employees, a turnover of €1.15 billion (2024), and a presence in over 40 countries. It is wholly owned by its managers and employees.

ARTELIA IN ITALY

Artelia Italia is one of the Group's leading companies in terms of services offered, turnover and workforce. Active in the construction, energy, transport and urban development sectors, it strengthened its position with the acquisition of Intertecnio in 2015. Today, it has over 700 professionals, a turnover of around €75 million (2024) and offices in seven Italian cities.

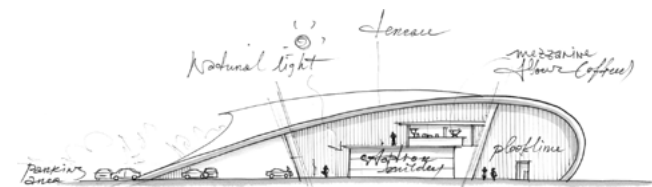




The city planned for the Antigua and Barbuda Special Economic Zone will be built from scratch, with an iconic skyline visible from the sea, and will be served by an electric people mover connecting the port, airport, and main urban areas.

ABOUT ERREGI

Founded in 1986, Erregi is an engineering, architecture and urban planning company specialising in the integrated design of transport infrastructure (roads, railways, tramways, underground railways and airports). With a team of over 30 professionals, it offers comprehensive services, from feasibility studies to executive projects, distinguishing itself for its technical expertise, aesthetic quality and organisational skills. With over 35 years of experience, it also operates as a system integrator, thanks to its in-depth knowledge of design contexts.



OUR SERVICES

Multidisciplinary experience and design integration for complex and sustainable infrastructure

THE INFRASTRUCTURE SECTOR is a leader in the design of complex structures at national and international level. Synergy with the architectural and transport sectors makes company a comprehensive reference point in design. It follows a performance-based approach in line with modern regulations, offering support in all design phases.

THE ARCHITECTURE SECTOR operates in large infrastructure projects thanks to an expert team and the use of advanced technologies. In addition to architectural design, it integrates environmental and safety expertise, ensuring a comprehensive approach. Each project is followed through all phases, with quality control and attention to detail right up to the final implementation.

THE TRANSPORT SECTOR is ERREGI's historic division, with consolidated experience in railway, road and airport projects. It has carried out complex works in Italy and abroad, such as high-speed railways, underground railways, trams and airports.



Its multidisciplinary activities include feasibility studies, executive and construction projects, urban planning studies and environmental impact assessments. The ability to manage complex multidisciplinary projects stems from a culture, pursued since the beginning, based on the integration of taste and aesthetic sensitivity, technical and technological expertise and organisational skills. Designers are

trained to communicate and work in synergy in order to carry out the work in a coherent manner, as it was conceived and designed, through attention to the smallest details and planning of the construction activities. Its assets consist of over 30 engineers, architects and designers and a 'project bank' built up over 40 years. ERREGI also acts as a system integrator with in-depth knowledge

and expertise in specific design areas. To this end, it uses advanced tools and software in the world of BIM and virtual reality.



LEARN MORE





Riyadh subway station, line 3

ARTELIA AND ERREGI

Artelia Italia's acquisition of Erregi marks a decisive step in its expansion in the mobility sector

With the acquisition of 100% of Erregi S.r.l., an engineering company with consolidated experience in the integrated design of transport infrastructure, Artelia Italia is taking a strategic step in its growth and diversification plan in the country. The transaction consolidates Artelia's position among the leading engineering firms in Italy and ex-

pands its expertise in the urban and extra-urban mobility sector, thus completing its offering in all major areas of engineering: infrastructure, real estate, retail, energy and industry.



LEARN MORE



'e-BRT BERGAMO

Sustainable mobility between Bergamo and Dalmine: the 'e-BRT' project, funded by the PNRR, is underway

The 'e-BRT' project, financed with PNRR funds, involves a high-frequency electric Bus Rapid Transit line between the Bergamo intermodal hub and the Dalmine university campus, to enhance the manufacturing area between Bergamo and Dalmine. The route, which is 29.78 km long with 21 stops, extends the service to Verdellino and will run largely on dedicated lanes, with an estimated annual volume of 900,000 km*vehicles. Artelia Italia is leading the design team, supported by Artelia SAS, Erregi and other Italian companies, handling both the design and project management.

Client:
ATB Mobilità SpA,
Vitali SpA

Period:
2023-2024

Artelia Italia Services:
Project Management
System Installations

Erregi Services:
Urban planning
Architectural design of stops



PUBLIC TRANSPORT AXES IN GENOA

A new sustainable transport system to connect Genoa along four strategic routes

Genoa's '4 Assi di Forza' trolleybus system covers the city's main arteries and is part of the PNRR (National Recovery and Resilience Plan). It is a rapid-to-implement, flexible and zero-emission infrastructure. The project involves 96 km of network on four routes: Centro, Ponente, Levante and Val Bisagno. It includes infrastructure, stops (over 300), terminals, tracks and technological systems. The construction has been entrusted to RTP (Leonardo, ICM, Colas Rail), with Artelia Italia as Project Manager.

Client:
Municipality of
Genoa

Period:
2023-2024

Artelia Italia Services:
Project Management
System installations
Environmental mitigation

Erregi Services:
Urban and architectural
arrangements
Structural design





NEW SIR2 TRAM LINE

A new tram line to connect Padua, Vigonza and the New Hospital in the name of sustainable mobility

The SIR2 tram line in Padua, financed by the PNRR, is part of the sustainable mobility strategies of the Municipality and the metropolitan area, in line with the PUMS. Lot 2 EST connects Padua station to Vigonza and the future New Hospital. The project includes roads, stops, depots, workshops, car parks, terminus and technological networks. RTP was responsible for the detailed design, while Artelia Italia acted as Project Manager.

Client:
ATM SpA,
Vittadello SpA

Period:
2023-ongoing

Artelia Italia Services:
Project Management
System installations
Environmental mitigation

Erregi Services:
Urban and architectural
arrangements
Structural design

NEW TRAMWAY IN ROME

A new strategic tramway to integrate the metro, railway and urban mobility along Viale Togliatti

The new tramway on Viale Palmiro Togliatti, financed by the PNRR, will connect the tram network with metro lines A, B and C and the FL2 railway line. The 8 km route with 19 stops connects Ponte Mammolo to Subaugusta, with interchanges at Centocelle and Palmiro Togliatti. The project includes road infrastructure, stops, terminals, logistics and technological network. RTP was responsible for the executive design, while Artelia Italia will manage the coordination.

Client:
Municipality of
Rome Companies:
Pangea/Elus/Sielte

Period:
2023-ongoing

Artelia Italia Services:
Project Management
System Installations

Erregi Services:
Urban and architectural
arrangements
Structural design



KEY PROJECTS



GARE DU NORD NOUVEAU TERMINAL ET EXTENSION

Redevelopment of Europe's first railway station by upgrading lines and facilities, new multi-storey building and three footbridges over the RFN in operation.

Client: SNCF Gares & Connexions
Period: 2018-2024
Services: Complete project management



LIGHT RAIL TRANSIT SYSTEM COSENZA-RENDE

Project for a tram line between Cosenza-Rende and the University of Calabria, with 32 stops and two-way tracks on existing roads.

Client: CMC Coop, Muratori Cementisti Ravenna
Period: 2017
Services: Infrastructure, structural, architectural and plant design



GRAN PARIS EXPRESS

Strategic urban project, an extension of the Paris metro network designed to connect the municipalities of the surrounding ring road.

Client: Société du Grand Paris
Period: 2013-2030
Services: Project management (line 18, western section of line 15)



PALMIRO TOGLIATTI TRAM DEPOT

Integrated project for the new tram workshop depot and related garage near Viale Togliatti with related civil and mechanical systems.

Client: Municipality of Rome
Period: 2023
Services: Infrastructure, structural, architectural and plant design



RIYADH METRO LINE 3

Executive design of six underground stations on line 3 of the Riyadh metro, plus two surface stations and two rolling stock depots and workshops.

Client: CWG
Period: 2015-2020
Services: Architectural and structural design



MALATESTA STATION – ROME METRO LINE C

Comprehensive design of a station comprising a two-level underground plaza with urban and commercial functions. Study of an eco-sustainable and energy self-sufficient structure.

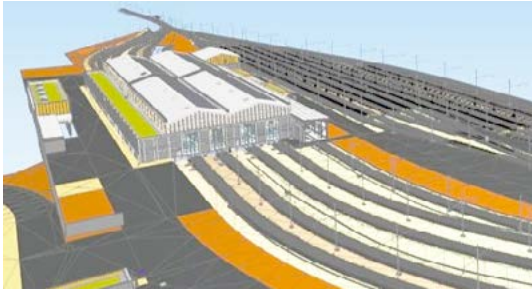
Client: Metro C
Period: 2005-2015
Services: Architectural and structural design



UPGRADING OF THE TERMINI METRO 'A' – METRO 'B' JUNCTION

Revamping of the Metro A-Metro B stops at Termini station and new pedestrian link between the two platforms.

Client: Roma Metropolitana - Maltauro
Period: 2008-2009
Services: Structural, architectural and plant design



SNCF MAINTENANCE SITE IN MONTIGNY-LES-METZ

Upgrading of train storage and maintenance facility with 4-track workshop, storage sidings, washing facilities and complete railway infrastructure.

Client: SNCF Voyageurs
Period: 2020-2024
Services: Complete project management



UPGRADE OF THE SS 199 SASSARI- OLBIA LOT 3 AND LOT 8

Executive design and works execution for the upgrading of the SS 199 to type B (4 lanes) and related junctions, underpasses, overpasses and bridges in 2 lots.

Client: Anas - De Sanctis, Italiana Costruzioni
Period: 2013-2015
Services: Infrastructure and structural design and execution of works



TECHNICENTRE DE MAINTENANCE VILLENEUVE DEMAÏN

Construction of a workshop with 4 tracks with retractable contact lines, storage tracks, EALE structures, signalling and PIVOS centre.

Client: SNCF Voyageurs
Period: 2019-2024
Services: Railway project management



SULYMANIA TRAM SYSTEM

Executive design for a tram system consisting of 8 lines (58.8 km) and 128 stations, including depots, workshops and an operations control centre.

Client: Ministry of Transport - Kurdistan
Period: 2011-2012
Services: Infrastructure, structural and architectural design



MIRTO-CROSIA-LONGOBUCCO-SILA ROAD AXIS

Executive design of the road axis, category C1, for approximately 6.5 km, with three viaducts and embankment protection works.

Client: ECIT Consortium
Period: 2016-2018
Services: Infrastructure and structural design





Telt Tunnel Lyon-Turin
Copyright photo credits TELT



PROJECT SPECIFICS

Client:
TELT

Period:
2019-ongoing

Services:
Project coordination and
assistance to the client

TELT LYON-TURIN TUNNEL

The longest railway tunnel in the world

The construction of the Lyon-Turin transalpine rail link is in line with the European Community's ambition to develop sustainable rail-based transport infrastructure designed to help reduce car traffic. At the heart of this new line is the construction of an exceptional engineering structure, a 57.5- -kilometre tunnel passing under the Mont Cenis. Artelia is assisting the contracting authority (TELT) in this unique project.

Crossing the Alps for 57.5 km between Saint-Jean-de-Maurienne (France) and Susa (Italy), the TELT (Tunnel Euralpin Lyon Turin) will be the longest railway tunnel in the world. It will be the key element of a new rail link between France and Italy, designed to carry 5 million passengers per year and nearly 40 million tonnes of freight, thereby reducing road transport and the associated pollution problems.

This is a highly complex infrastructure, consisting of two parallel tubes 57.5 km and s long, as well as over 200 safety branches and 4 descents (access roads to the construction site, subsequently used for maintenance). TELT has adopted an ESG approach for this project. To ensure the safety of workers and local residents, the construction sites are constantly monitored by control centres

that measure 135 environmental parameters (water, dust, asbestos, radon, etc.). TELT has chosen Artelia to lead the project management assistance consortium that is helping it to successfully complete this major project, which is currently scheduled for completion in 2030. Artelia is coordinating the numerous parties involved and carrying out various technical and regulatory studies in all sectors affected by the

project (civil engineering, geology, geotechnics, railway equipment, railway operation, environment, safety, etc.).



TRAFFIC MODEL COPENHAGEN

A cutting-edge tool for mobility planning

The City of Copenhagen has developed a cutting-edge tool to accurately model traffic associated with different types of mobility, taking into account interactions between modes (car, bicycle, pedestrians, public transport). The aim is to provide planners with new ways of understanding traffic and anticipating its evolution. Artelia led the team of consultants that designed this model, called COMPASS.

Unlike the old model, which was based on journeys, the new COMPASS (Copenhagen Model for Passenger Activity Scheduling) focuses on activities, i.e. user behaviour. The model seeks to describe people's daily activities based on household composition. This method sheds light on combined journeys, such as cycling to the train, parking behaviour and congestion on cycle paths and public transport. Another innovative aspect of the model is its ability to analyse new transport technologies, such as driverless cars, car sharing and driverless minibuses.

Client:
Municipalities of Copenhagen
and Gladesaxe, Capital Region
(Hovedstaden)

Period:
2018-2020

Services:
Traffic modelling





OUR OFFICES

ROME

HEADQUARTERS

Palazzo Italia
Piazza Marconi, 25
00144 Rome - Italy
Tel. 06 59193301

MILAN

MAC2 Building
Via Benigno Crespi 19
20159 Milan - Italy
Tel. 02 607901

BARI

Via Amendola, 166/5
70126 Bari - Italy

FLORENCE

Via Panciatichi Ed. B11, 40
50127 Florence - Italy

PESCARA

Via L'Aquila, 9
65121 Pescara - Italy

CATANIA

Via Giacomo Leopardi, 91
95127 Catania - Italy

TURIN

Corso Valdocco, 2
10122 Turin - Italy

